

Blaupunkt-Werke GmbH, Hildesheim

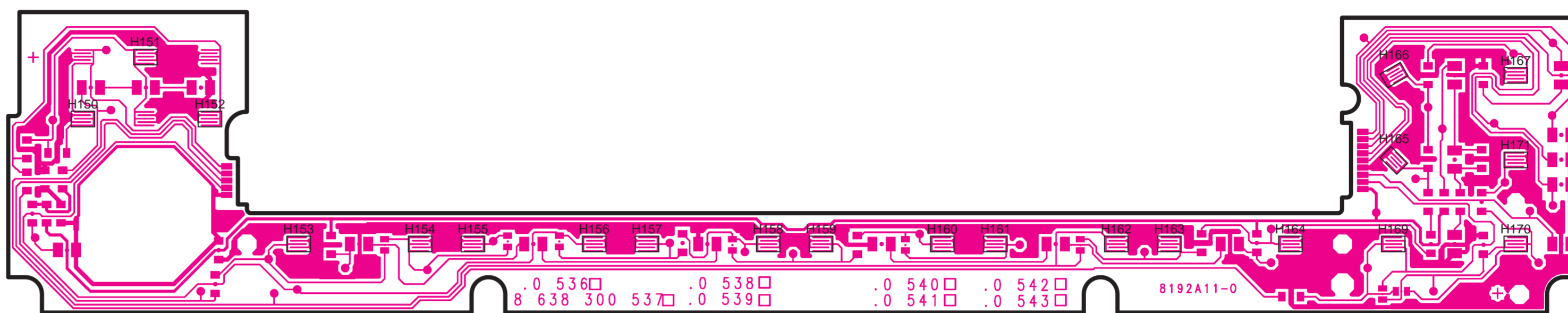
Gerätevariante E39	D150 D151 D152	D171	R164	R166	R167	R168	R169	R185	Best.Variante Platten-Nr.
AUDIO/DSP/UHR 7 609 260 040	entf.	entf.	22k	0	entf.	0	entf.	240	... 8224
AUDIO/DSP/TEL/UHR 7 609 261 040	LED	LED	22k	0	33k	0	entf.	entf.	... 8229
AUDIO/DSP/UHR/BC 7 609 262 040	entf.	entf.	22k	11k	entf.	entf.	0	240	... 8231
AUDIO/DSP/TEL/UHR/BC 7 609 263 040	LED	LED	22k	11k	22k	entf.	0	entf.	... 8192
AUDIO/UHR 7 609 264 040	entf.	entf.	0	0	entf.	0	entf.	240	... 8225
AUDIO/TEL/UHR/BC 7 609 265 040	LED	LED	0	11k	22k	entf.	0	entf.	... 8227
AUDIO/UHR/BC 7 609 266 040	entf.	entf.	0	11k	entf.	entf.	0	240	... 8233
AUDIO/TEL/UHR 7 609 267 040	LED	LED	0	0	33k	0	entf.	entf.	... 8235

* = Versionsabhängige Bestückung

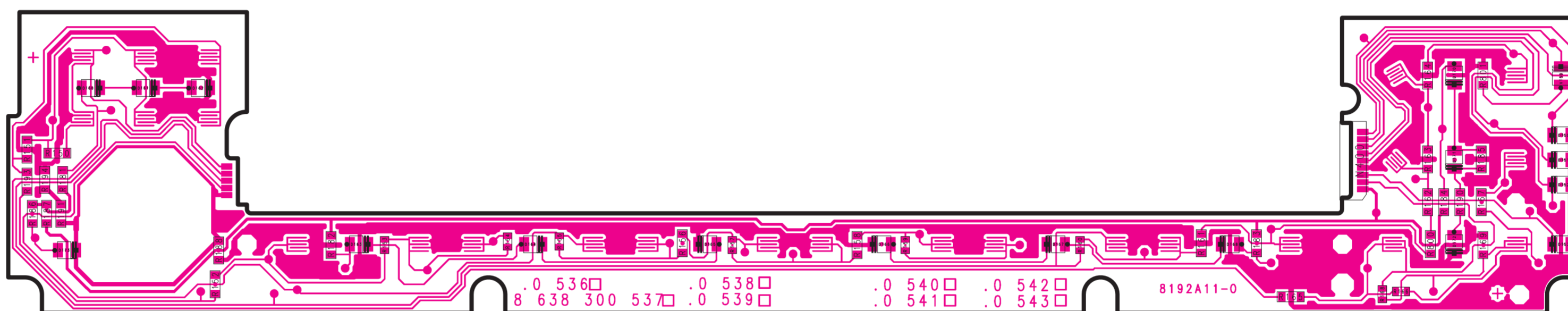
Gerätevariante E53	D150 D151 D152	D171	R164	R166	R167	R168	R169	R185	Best.Variante Platten-Nr.
AUDIO/BC 7 609 270 040	entf.	entf.	0	11k	entf.	entf.	0	240	... 8233
AUDIO/BC/TEL 7 609 271 040	LED	LED	0	11k	22k	entf.	0	entf.	... 8227
AUDIO/DSP/BC 7 609 272 040	entf.	entf.	22k	11k	entf.	entf.	0	240	... 8231
AUDIO/DSP/TEL/BC 7 609 273 040	LED	LED	22k	11k	22k	entf.	0	entf.	... 8192
AUDIO/UHR 7 609 274 040	entf.	entf.	0	0	entf.	0	entf.	240	... 8225
AUDIO/TEL/UHR 7 609 275 040	LED	LED	0	0	33k	0	entf.	entf.	... 8235
AUDIO/DSP/UHR 7 609 276 040	entf.	entf.	22k	0	entf.	0	entf.	240	... 8224
AUDIO/DSP/TEL/UHR 7 609 277 040	LED	LED	22k	0	33k	0	entf.	entf.	... 8229

* = Versionsabhängige Bestückung

Schalterplatte
Key board
PL 8192 A11



Schalterplatte
Key board
PL 8192 A11
Chip



BLAUPUNKT

BMW MID E39
Multi Informations Display

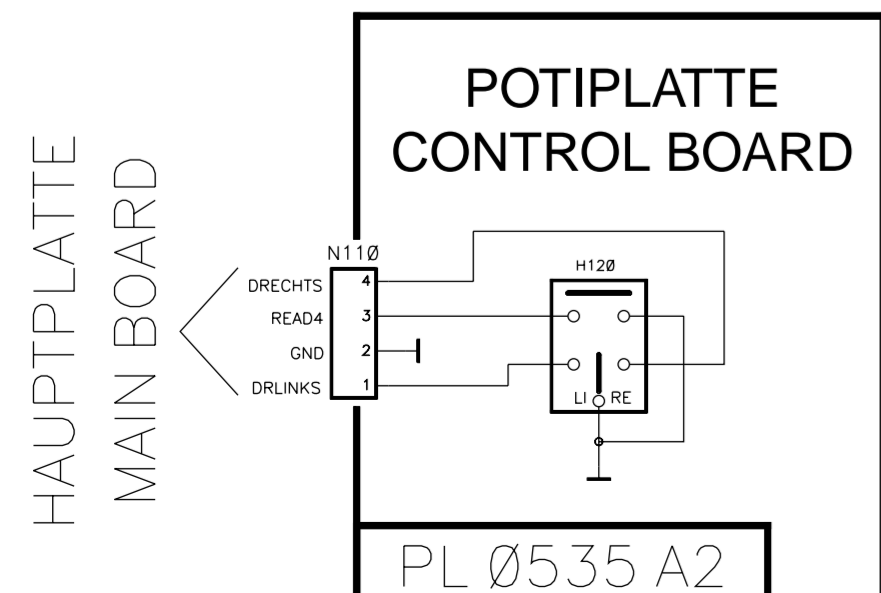
- AUDIO/DSP/UHR
7 609 260 040
- AUDIO/DSP/TEL/UHR
7 609 261 040
- AUDIO/DSP/UHR/BC
7 609 262 040
- AUDIO/DSP/TEL/UHR/BC
7 609 263 040
- AUDIO/UHR
7 609 264 040
- AUDIO/TEL/UHR/BC
7 609 265 040
- AUDIO/UHR/BC
7 609 266 040
- AUDIO/TEL/UHR
7 609 267 040

BMW MID E53
Multi Informations Display

- AUDIO/BC
7 609 270 040
- AUDIO/BC/TEL
7 609 271 040
- AUDIO/DSP/BC
7 609 272 040
- AUDIO/DSP/TEL/BC
7 609 273 040
- AUDIO/UHR
7 609 274 040
- AUDIO/TEL/UHR
7 609 275 040
- AUDIO/DSP/UHR
7 609 276 040
- AUDIO/DSP/TEL/UHR
7 609 277 040

8 622 402 197 BN-WG 10/99

Schaltbild • Circuit diagram



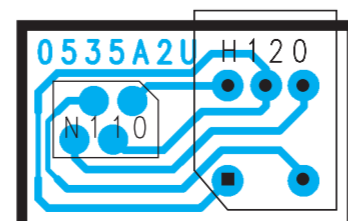
Gerätevariante E39	R410 V410	R415 V415	R420 V420	Best.Variante Platten-Nr.
AUDIO/DSP/UHR 7 609 260 040	-	-	-	... 0784
AUDIO/DSP/TEL/UHR 7 609 261 040	X	X	X	... 0785
AUDIO/DSP/UHR/BC 7 609 262 040	-	-	-	... 0784
AUDIO/DSP/TEL/UHR/BC 7 609 263 040	X	X	X	... 0785
AUDIO/UHR 7 609 264 040	-	-	-	... 0784
AUDIO/TEL/UHR/BC 7 609 265 040	X	X	X	... 0785
AUDIO/UHR/BC 7 609 266 040	-	-	-	... 0784
AUDIO/TEL/UHR 7 609 267 040	X	X	X	... 0785

X = bestückt -- nicht bestückt

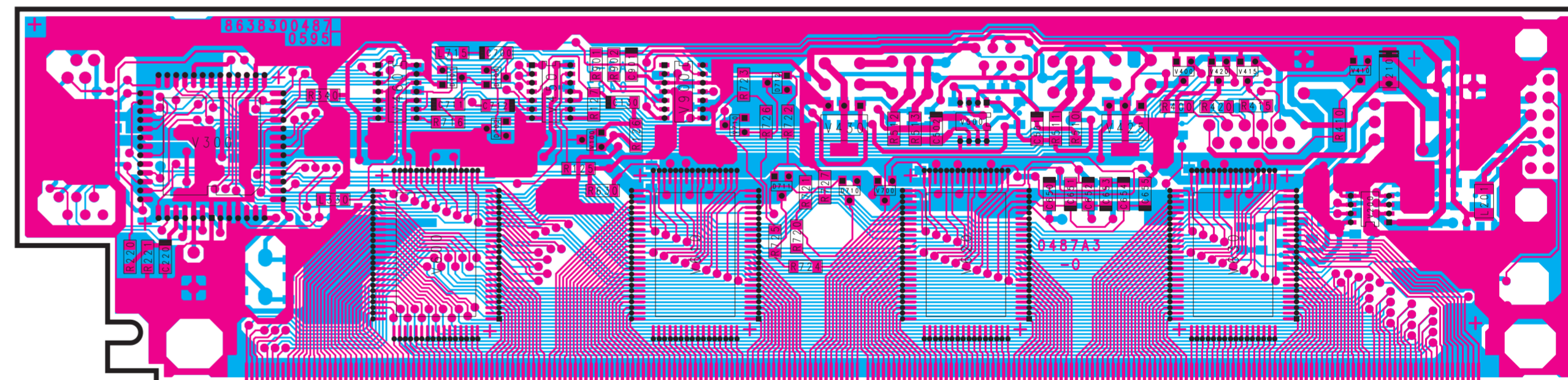
Gerätevariante E53	R410 V410	R415 V415	R420 V420	Best.Variante Platten-Nr.
AUDIO/BC 7 609 270 040	-	-	-	... 0595
AUDIO/BC/TEL 7 609 271 040	X	X	X	... 0487
AUDIO/DSP/BC 7 609 272 040	-	-	-	... 0595
AUDIO/DSP/TEL/BC 7 609 273 040	X	X	X	... 0487
AUDIO/UHR 7 609 274 040	-	-	-	... 0595
AUDIO/TEL/UHR 7 609 275 040	X	X	X	... 0487
AUDIO/DSP/UHR 7 609 276 040	-	-	-	... 0595
AUDIO/DSP/TEL/UHR 7 609 277 040	X	X	X	... 0487

X = bestückt -- nicht bestückt

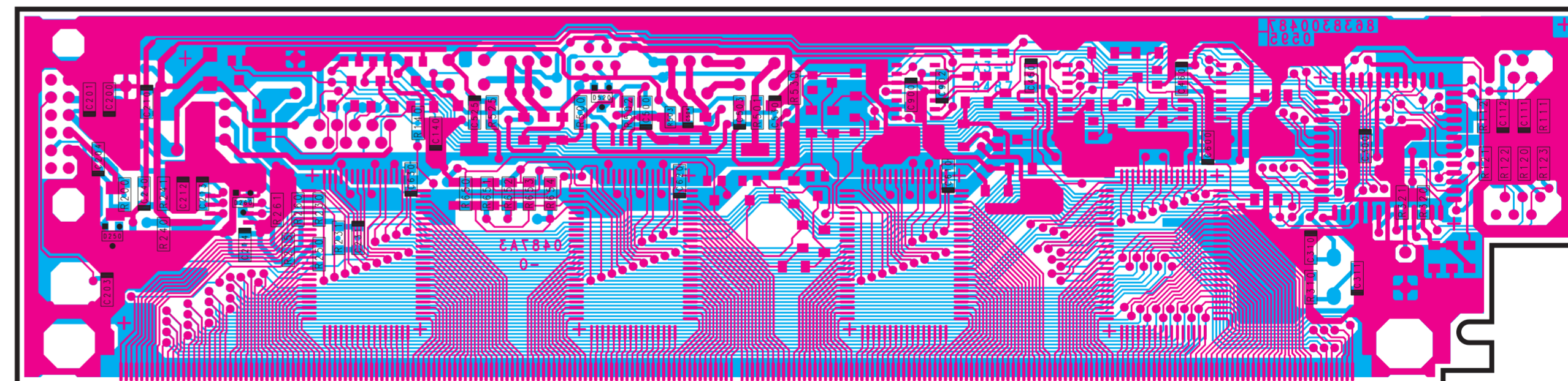
Potiplatte
Control board
PL 0535 A02



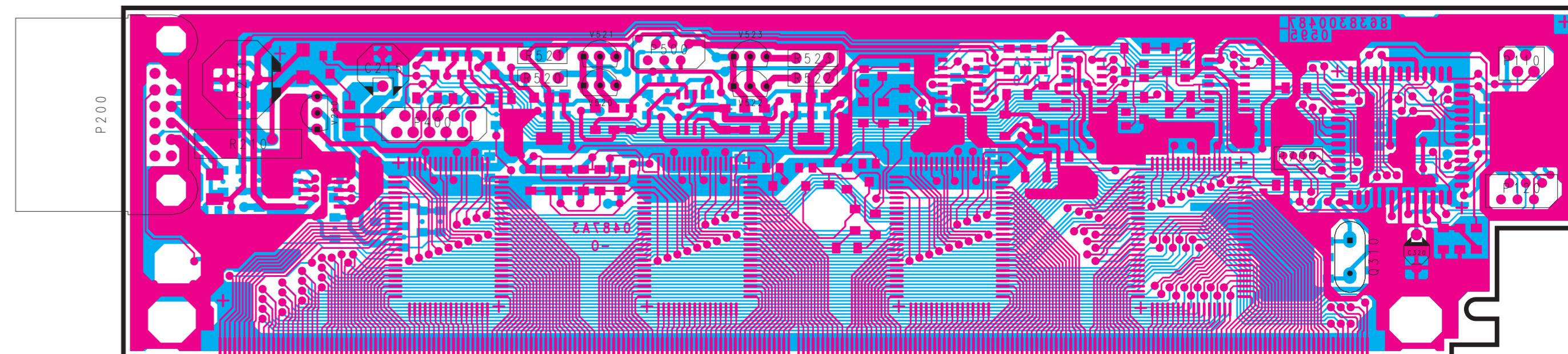
Hauptplatte
Main board
PL 0487 A03
Chip

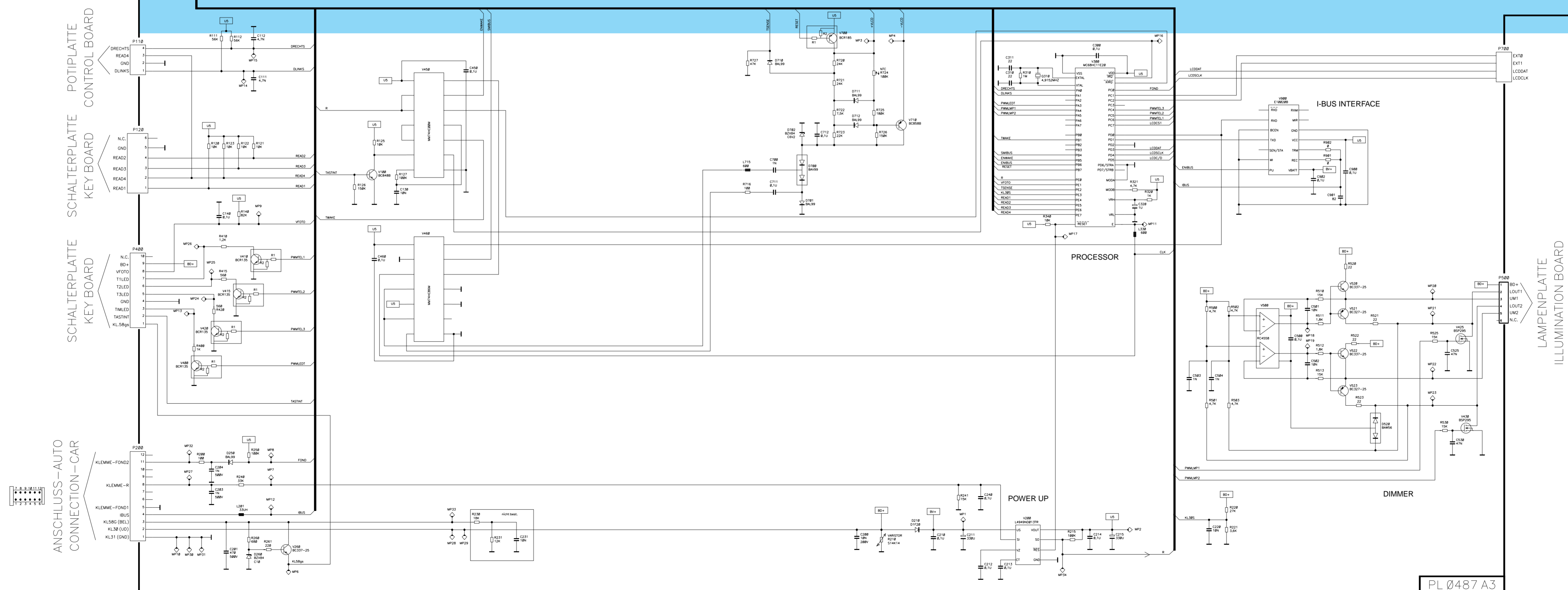
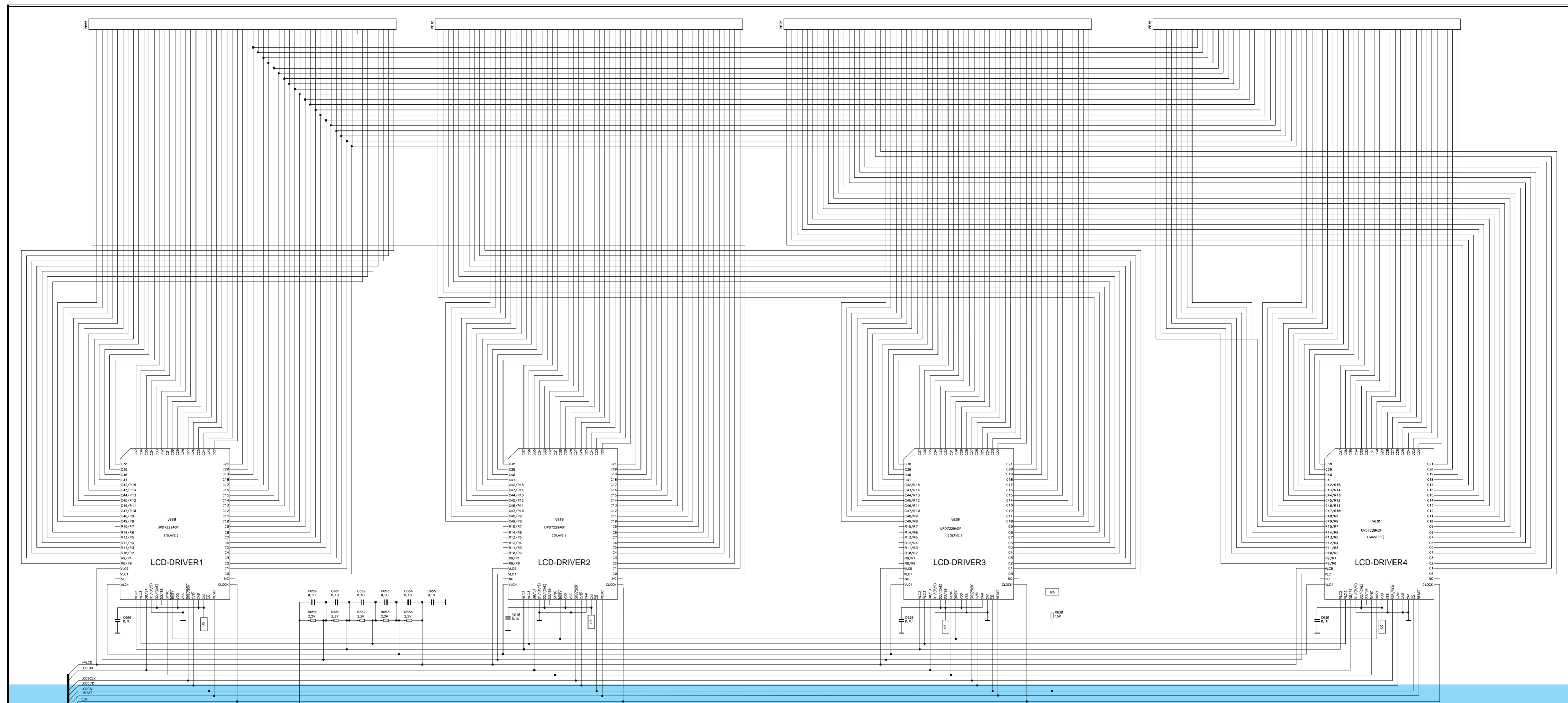


Hauptplatte
Main board
PL 0487 A03
Chip

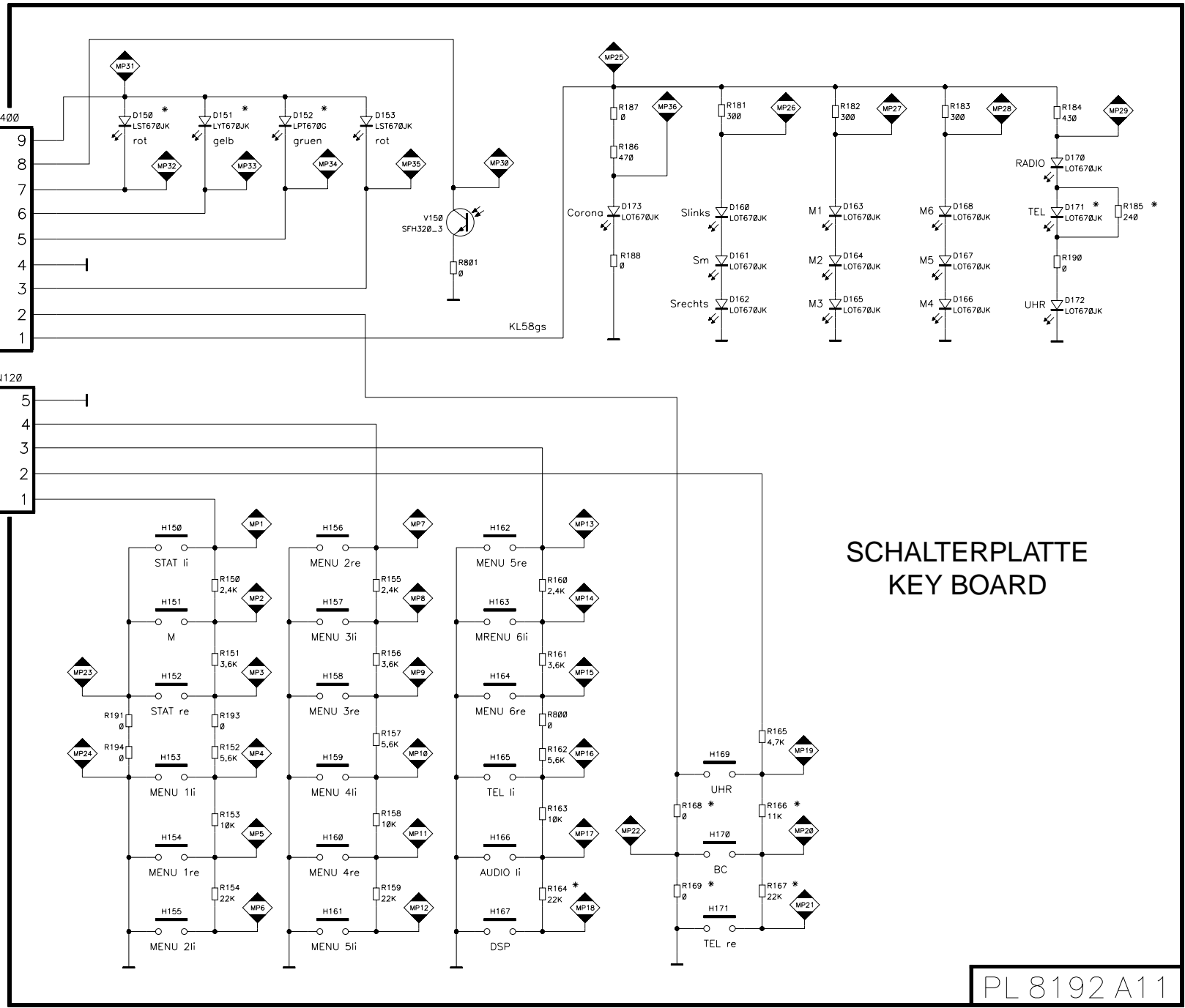
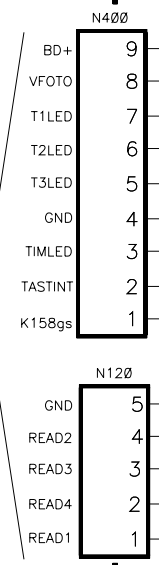


Hauptplatte
Main board
PL 0487 A03

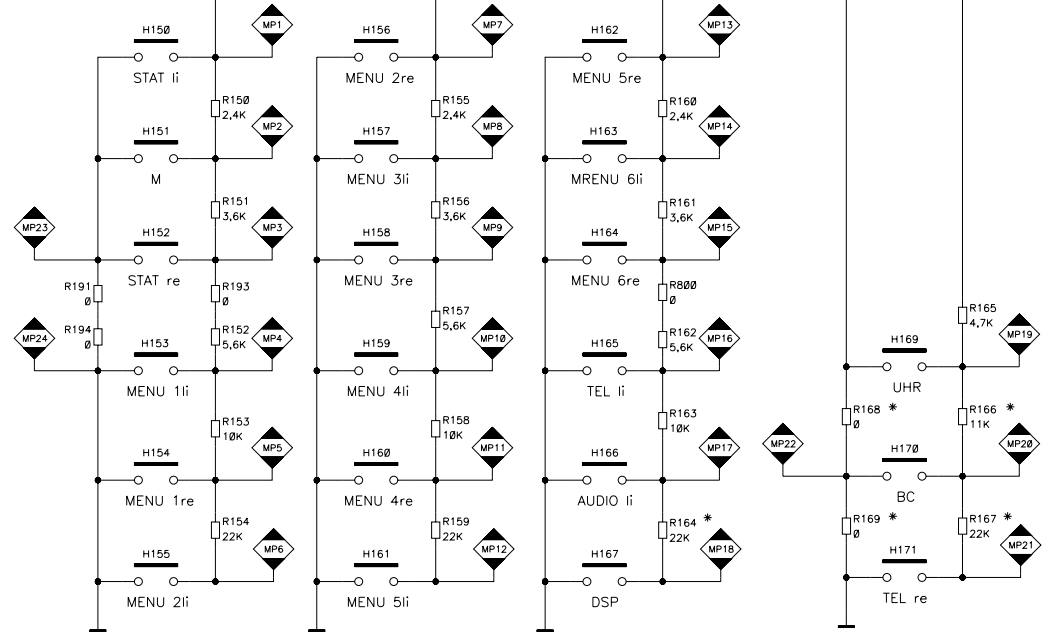




HAUPTPLATTE
MAIN BOARD



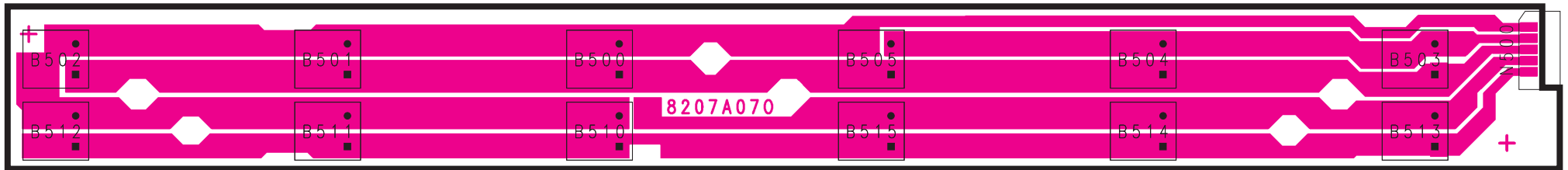
SCHALTERPLATTE
KEY BOARD



PL 8192 A11

zu Schaltbild BMW MID E39 / BMW MID E53 8 622 402 197

Lampenplatte
Illumination board
PL 8207 A07
Chip



HAUPTPLATTE
MAIN BOARD

